



# American Dynamics

*From Tyco Security Products*

victor EntraPass Integration User Guide

v5.4.1

Revision A0

---

## Notice

The information in this manual was current when published. The manufacturer reserves the right to revise and improve its products. All specifications are therefore subject to change without notice.

## Copyright

Under copyright laws, the contents of this manual may not be copied, photocopied, reproduced, translated or reduced to any electronic medium or machine-readable form, in whole or in part, without prior written consent of Johnson Controls.

© 2019 Johnson Controls. All Rights Reserved.

American Dynamics  
6600 Congress Avenue  
Boca Raton, FL 33487 U.S.A.

## Customer Service

Thank you for using American Dynamics products. We support our products through an extensive worldwide network of dealers. The dealer through whom you originally purchased this product is your point of contact if you need service or support. Our dealers are empowered to provide the very best in customer service and support. Dealers should contact American Dynamics at (800) 507-6268 or (561) 912-6259 or on the Web at [www.americandynamics.net](http://www.americandynamics.net).

## Trademarks

Windows® is a registered trademark of Microsoft Corporation. PS/2® is a registered trademark of International Business Machines Corporation.

The trademarks, logos, and service marks displayed on this document are registered in the United States [or other countries]. Any misuse of the trademarks is strictly prohibited and Johnson Controls will aggressively enforce its intellectual property rights to the fullest extent of the law, including pursuit of criminal prosecution wherever necessary. All trademarks not owned by Johnson Controls are the property of their respective owners, and are used with permission or allowed under applicable laws.

Product offerings and specifications are subject to change without notice. Actual products may vary from photos. Not all products include all features. Availability varies by region; contact your sales representative.

---

## Introduction

|                                      |   |
|--------------------------------------|---|
| EntraPass Integration Overview ..... | 1 |
| Product Components .....             | 1 |
| Features .....                       | 2 |

## Installation

|                                    |   |
|------------------------------------|---|
| Minimum Requirements .....         | 4 |
| Hardware .....                     | 4 |
| Software .....                     | 4 |
| Installation .....                 | 4 |
| EntraPass Configuration File ..... | 5 |

## Operation

|  |    |
|--|----|
| Administration Functions .....           | 6  |
| Hardware Information .....               | 6  |
| Adding EntraPass Servers .....           | 6  |
| Victor Integration .....                 | 8  |
| Roles .....                              | 8  |
| Associations .....                       | 8  |
| Reports .....                            | 9  |
| Events .....                             | 9  |
| Predefined EntraPass Events .....        | 10 |
| EntraPass Actions .....                  | 10 |
| Maps .....                               | 11 |
| EntraPass Objects .....                  | 12 |
| Swipe and Show .....                     | 17 |
| General Operation .....                  | 17 |
| Manual Actions .....                     | 18 |
| Doors .....                              | 18 |
| Inputs .....                             | 18 |
| Relays .....                             | 18 |
| Servers .....                            | 19 |
| Context (Right Click) Menu options ..... | 19 |
| Controllers .....                        | 19 |
| Sites .....                              | 20 |

---

# Troubleshooting

Troubleshooting: . . . . . 21

# Appendix A

KT 400 Controller configuration with DSC PowerSeries . . . . . 1

    Requirements . . . . . 1

    Hardware Setup . . . . . 1

EntraPass Setup . . . . . 1

    KT-NCC Controller Configuration . . . . . 2

    What is the KT NCC? . . . . . 2

# Appendix B

Configuring EntraPass for remote victor Client operation . . . . . 1

    Prerequisites . . . . . 1

Configuring Ports with an SSL Certificate . . . . . 2

    Prerequisites . . . . . 3

    Binding an SSL certificate to a port number and support client certificates . . . . . 4

# Introduction

## EntraPass Integration Overview

The EntraPass server integration provides advanced, seamless integration between victor and EntraPass servers allowing users to monitor and synchronize their devices from within the victor interface.

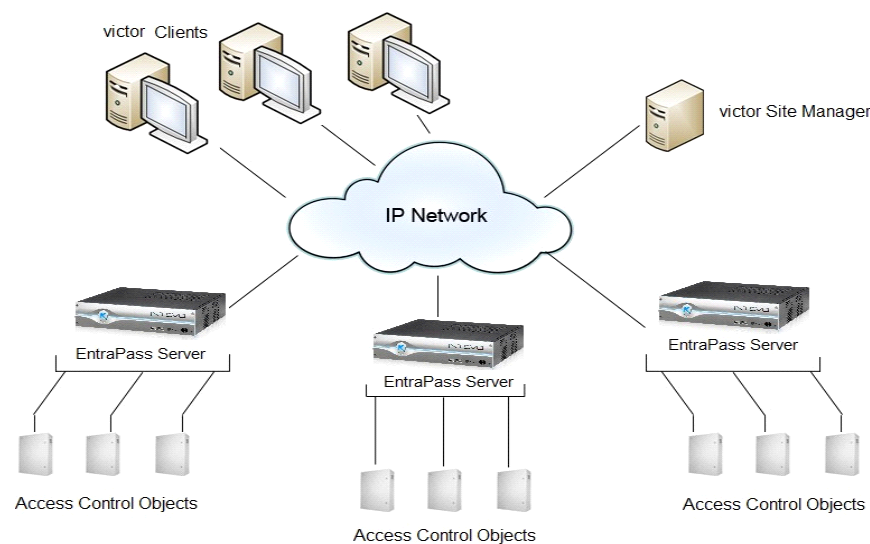
## Product Components

**EntraPass Client:** Used to specify connection details to EntraPass server and perform synchronization actions.

**EntraPass Objects:** Physical or logical EntraPass entities within the victor environment.

**EntraPass Server Component:** Facilitates and maintains communication with the EntraPass unit and auto-creates Sites, Controllers, Doors, Inputs and Relay objects based on EntraPass unit properties.

**Figure 3-1 System Overview**



## Features

The objective of the EntraPass Integration is to provide a standard, single interface between EntraPass and American Dynamic's victor Video Management product.

The following are the supported features:

- Supports features such as Create, Edit, or Delete a server object.
- Supports KT NCC Gateway.
- View and Delete feature for Gateway, Site, Controller, Door, Input, and Relay.

---

**Note**

When server has large number of objects (5000+), it is recommended to delete sites instead of deleting EntraPass server.

---

- Supports configuration of a server object by using either the Machine Name or IP Address.
- Manual and Auto Synchronization for server.

---

**Note**

In EntraPass Integration driver, it is recommended to perform sync operation on one server at a time.

---

- Supports the following manual actions for Door objects:
  - Lock
  - Unlock
  - Unlock Temporarily
  - Enable Reader
  - Disable Reader
  - Arm
  - Disarm Door
  - One Time Access
- Supports the following manual actions for Input objects:
  - Continuous
  - No Supervision
  - No Supervision-Delay
  - Normal
- Supports the following manual actions for Relay objects:
  - Activate
  - Deactivate
  - Activate Temporarily
- Supports Integration with victor **Roles**, victor **Object Association**, victor **Journal**, and victor Event Management.
- Supports the EntraPass Object Integration with the following victor features:
  - Maps
  - Find in Journal
  - Find on Map
  - victor Health Dashboard
- Supports the smart service binding in the form of https.
- Supports **Swipe and Show** feature, **Synchronization of Personnel** and **Synchronization of Personnel Images**.
- Supports predefined events for Servers, Sites, Controllers and Doors.
- Supports EntraPass Actions feature for Servers, Doors and Relays.

# Installation

## Minimum Requirements

### Hardware

The EntraPass integration has the same hardware requirements as victor Application Server. Therefore, if the machine can successfully run victor then it will satisfy EntraPass integration requirements.

EntraPass integration requires approximately 50MB of available Hard Disk space.

### Software

- EntraPass Server
- EntraPass victor Integration
- victor Application Server
- victor Unified Client

## Installation

The EntraPass installer must be installed on both victor Server and all victor Client machines.

### Note

Refer to Appendix B for information on configuring EntraPass servers for use with victor Unified Client over a secure (https) connection.

### Procedure 4-1 Adding EntraPass Integration to victor

| Step | Action   |
|------|--|
| 1    | Close any currently running programs.  |
| 2    | Open a web browser and navigate to <a href="http://www.americandynamics.net">http://www.americandynamics.net</a> .   |
| 3    | Download the appropriate version of the EntraPass Integration software driver for your version of victor.  |
| 4    | Launch the EntraPass Integration Software Driver. The Welcome to EntraPass Integration Setup window displays.  |
| 5    | Click <b>Next</b> . The End User License Agreement (EULA) window displays.   |
| 6    | Read the <b>EULA</b> .   |
| 7    | Select the <b>I accept the terms in the license agreement</b> button, then click <b>Next</b> .   |
| 8    | Click <b>Install</b> . The program begins to install, this may take several minutes. Once completed the <b>Install Shield Wizard Complete</b> window displays. |



- 9 Click **Finish**. After installation, a new group called EntraPass is available on the Setup tab.

---

#### Note

The install process stops all victor Server services, these services must be restarted on victor Server machines once the install is complete.

---

## EntraPass Configuration File

The EntraPass Configuration file is located at Tyco/ Crossfire/ ServerComponents. This section describes the values that you can change in the EntraPass Configuration file:

---

#### Note

If you make any changes in the configuration file, you must restart the driver. Ensure that you change the values only after consulting with the product support team.

**HeartBeatTimeOut:** Use this variable to set a server state to Offline, if driver does not receive any message for this duration from the last received message packet. Default value is 180000 (in milliseconds).

**ReconnectInterval:** Use this variable to define the duration of server reconnection retry after it goes to Offline. Default value is 60000 (in milliseconds).

**AutoSynchronization:** Use this variable to define whether user wants to do auto sync whenever a server comes Online from Offline state. AutoSynchronization values are 'TRUE' and 'FALSE'. Default value is FALSE.

**NumberOfCards2Read:** Use this variable to define the number of Personnel that must be read in each request during personnel Sync. Default value is 100.

**NumberOfImages2Read:** Use this variable to define the number of simultaneous Personnel Images that must be requested in a batch during image sync. Default value is 5.

**Timeout4ImageBatchSyncRequest:** Use this variable to define the duration the batch image request must wait for the batch response to complete. Default value is 180 (in seconds).

**TimeoutInterval4ImageBatchResponse:** Use this variable to define the time interval after which driver checks whether image batch response is complete or not. After it is complete, next batch of images could be started. Default value is 2 (in seconds).

**ComponentStatusBatchSize:** Use this variable to define batch size of EntraPass devices that must be sent in request URL for device status updates. Default value is 100.

**StatusQueueCount:** Use this variable to define number of queues that run in parallel per EntraPass Server for processing status updates of EntraPass Server objects. Default value is 2.

**SyncBatchSize:** Use this variable to define the number of parallel Sync calls to the server and is dependent on the number of concurrent client licenses that a customer has in EntraPass Server. Default value is 7.

# Operation

## Administration Functions

**Save and Close:** Saves the current object and closes the editor.

**Save:** Saves changes and keeps the editor open, allowing further changes to be made.

**Save and New:** Saves the current object and opens a new editor to create a new object with default values populated.

**Close:** Cancels changes and closes the editor without saving.

## Hardware Information

Detailed hardware information is available for all configured EntraPass units.

### Procedure 5-1 Accessing Hardware Information

| Step | Action   |
|------|--|
| 1    | Select <b>EntraPass Servers</b> from Show All.   |
| 2    | Right-click the server you wish to view information for and select <b>Edit</b> .<br><br>This information is also available by right-clicking on a server in the <b>Device List</b> and selecting <b>Edit</b> . |

## Adding EntraPass Servers

### Procedure 5-2 Adding New EntraPass Servers

| Step | Action  |
|------|---|
| 1    | Select <b>EntraPass Server</b> from the <b>Create New Item</b> screen.  |
| 2    | New Server Editor displays.   |
| 3    | Enter a name for the server in the <b>Name</b> field.   |
| 4    | Enter a description for the server in the <b>Description</b> field.   |
|      | <b>Note</b><br>The <b>Enabled</b> check-box is selected by default. To deactivate the server, deselect the check-box. |
| 5    | Expand the Details section.   |
| 6    | Enter the IP Address of the server in the <b>IP Address</b> field.  |
| 7    | Enter the Port Number (Minimum 1 character, Maximum 5).   |
| 8    | Enter the UserID, which is the ID of the operator in the EntraPass application.                                       |

- 9 Enter the Password, which is the password of the operator in the EntraPass application.
- 10 Enter Event Poll Time.
- 11 Enter Service Protocol information.
- 12 Enter Status Poll Time.
- 13 You can review server status in the Server status section, refer table Table 1 Server Status on page 7.

**Table 1: Server Status**

| Property               | Value         |
|------------------------|---------------|
| Communication Status   | Online        |
|                        | Offline       |
|                        | Unknown       |
| Synchronization Status | Unknown       |
|                        | Synchronizing |
|                        | Synchronized  |
|                        | SyncFailed    |

- 1 Click **Save**.

---

- End -

---

## Editing EntraPass Servers

### Procedure 5-3 Edit EntraPass Servers

You can configure server connection details from within victor, using the EntraPass Server Editor.

**Figure 5-1 EntraPass Server Editor**

The screenshot shows the 'EntraPass Server Editor' window. It has a standard Windows-style title bar with icons for Save, Open, Print, and Close. The window is divided into three main sections: General, Details, and Status.

- General:** Contains fields for 'Name' (WIN-8EF26TN683I), 'Description' (WIN-8BF26TN683I), and a checked 'Enabled' checkbox.
- Details:** Contains fields for 'Machine Name or IP Address' (WIN-8EF26TN683I), 'Port Number' (8801), 'Service Protocol' (http), 'User ID' (yatish), 'Password' (masked with asterisks), 'Event Poll Time(In Seconds)' (10), and 'Status Poll Time(In Seconds)' (10).
- Status:** Contains fields for 'Communication Staus' (Online) and 'Synchronization Staus' (Synchronized).

---

|             |               |
|-------------|---------------|
| <b>Step</b> | <b>Action</b> |
|-------------|---------------|

---

- 1 Select **EntraPass Server** from **Edit Existing Item** screen.

- 2 Click the **Server** to be edited.
- 3 Select the General expander to edit:
  - **Name** (Mandatory must be unique)
  - **Description** (Optional)
  - **Enabled status** (Default is enabled)
- 4 Select the **Details** expander to edit:
  - **Machine Name or IP Address** (Mandatory) - This is the network address of the Server, by default it is 127.0.0.1. The following validation rules will apply to the Panel's Machine Name or IP address field:
    - The **Machine Name or IP Address** must be unique for each panel within the victor environment otherwise the message returns **Machine Name or IP Address not unique**.
  - **Port Number** (Mandatory) - The Port number of the server Min=1 character, Max=5 characters
  - **Service Protocol** (Mandatory) - The protocol used to communicate with the server

---

#### Note

If https is selected, a dialog displays prompting the user to complete the EntraPass smart link configuration to https. For this protocol to function, a valid SSL certificate must be added to the Kantech server.

---

- **User ID** (Mandatory) - ID of the operator in the EntraPass application
  - **Password** (Mandatory) - Password of the operator in the EntraPass application
  - **Event Poll Time** (Mandatory) - Poll time to request or poll for EntraPass events
  - **Status Poll Time** (Mandatory) - Poll time to request or poll for EntraPass device status
- 5 Click **Save**.

## Victor Integration

### Roles

EntraPass objects privileges are associated with victor roles, therefore all context menu actions associated with EntraPass objects are added to existing victor roles which can be edited accordingly. For more information on Roles, refer to the victor Configuration and User Guide.


### Associations

EntraPass servers support victor's **Object Association**. **Object Association** refers to linking unrelated victor objects with the intent of enabling incident building capability. Device associations are created within the victor editor of the source object (typically right click > edit). Up to 5 device associations can be made per object.

To create Object Associations in victor follow the below procedures:

#### Procedure 5-4 Create Object Associations

- 1 Navigate to the required source device on the victor Device List.

- 2 Right click the device and select Edit. The device editor opens.
- 3 Expand the Associations section.
- 4 Select icon 
- 5 Use the object selector to locate the object to be associated.
- 6 Click **OK**.
- 7 Repeat as required for up to 5 objects.

---

- End -

---

## Reports

EntraPass objects are included in the report selection tool and support the victor Find in Journal feature. For more information on Reports and the Find in Journal feature, refer to the *victor Configuration and User Guide*.

## Events




Events allow you to detect, monitor and record specific activities on the system.

EntraPass alarm activity can be used to trigger events within victor, these event types are fully integrated with victors Event Management system and respect all role /user permissions.

Event configuration in victor is a 2 step process:

- 1 Event/Action Pairing
- 2 Event Setup

### Procedure 5-5 Configuring events

| Step | Action   |
|------|--|
| 1    | Select <b>Event/Action pairing</b> from <b>configuration screen</b> . The editor opens.  |
| 2    | Double click the <b>Events</b> node. Object selector displays.   |
| 3    | Use the Object Selector to select events as required.  |
| 4    | Select  in the event node to assign actions.Repeat as required.   |
| 5    | Click <b>Save</b> .  |
| 6    | Select <b>Event Setup</b> from <b>configuration</b> screen. The event configuration window displays.   |
| 7    | Click the Devices node and use the object selector to select the required device (or drag and drop from the device list).  |
| 8    | Select  in the node of the device added and use the check-boxes in the drop down list to assign alerts as required. |
| 9    | Select <b>Add Alerts</b> . Selected alerts are displayed under the Alerts node.  |
| 10   | Select  in the <b>Alerts</b> node and use the object selector to assign actions.                                    |
| 11   | Click <b>Save</b> .  |

---

- End -

---

For further information on **Events**, refer to the *victor Configuration and User Guide*.

## Predefined EntraPass Events

The following predefined EntraPass events are available for doors, site controllers, and servers:

- EntraPass Server Online
- EntraPass Server Offline
- EntraPass Site Online
- EntraPass Site Offline
- EntraPass Controller Online
- EntraPass Controller Offline
- Door Held Alarm
- Door Forced Alarm

### Procedure 5-6 Viewing Predefined events


| Step    | Action   |
|---------|--|
| 1       | Select <b>Event</b> from <b>Show All</b> screen. Editor opens.             |
| 2       | All configured events including predefined EntraPass events are displayed. |
| - End - |  |

## EntraPass Actions

EntraPass Actions are available for the following objects:

- Servers
- Doors
- Relays

### Procedure 5-7 Configuring EntraPass Action

| Step | Action  |
|------|---|
| 1    | Select <b>EntraPass</b> action from <b>New</b> screen. The editor opens.  |
| 2    | Enter <b>Name</b> and <b>Description</b> for the EntraPass Action.  |
| 3    | In the <b>EntraPass Device</b> field, Select  to add device. Object Selector displays. |
| 4    | Select desired object and click <b>OK</b> .   |
| 5    | Repeat as required.   |
| 6    | Select desired action from the <b>EntraPass Device Action</b> drop down list.   |

- 7 Click **Save and Close**.

---

- End -

---

## Procedure 5-8 Editing EntraPass Action

| Step | Action |
|------|--------|
|------|--------|

- |   |  |
|---|--|
| 1 | Select <b>EntraPass Action</b> from <b>Edit</b> screen.  |
| 2 | Click the <b>EntraPass Action</b> that you want to edit. The editor opens.                             |
| 3 | Select the <b>General</b> expander to edit <b>Name</b> and <b>Description</b> .                        |
| 4 | Select the <b>Action</b> expander to edit <b>EntraPass Device</b> and <b>EntraPass Device Action</b> . |
| 5 | Click <b>Save and Close</b> .  |

---

- End -



---

## Maps

EntraPass objects are supported on victor **Maps** and the **Find on Map** feature. Objects respect all standard victor hardware behaviors such as annunciation, alarms, right click actions and drag and drop.

## Procedure 5-9 Configuring Maps

| Step | Action |
|------|--------|
|------|--------|

- |    |  |
|----|--|
| 1  | Select <b>Map</b> from the <b>New</b> screen. The editor displays.   |
| 2  | Enter a <b>Name</b> and <b>Description</b> for the map.  |
| 3  | Select  to <b>Import a map</b> .    |
| 4  | Browse to and select the required image.   |
| 5  | Click <b>Open</b> .  |
| 6  | Select <b>Import</b> . File imports and displays in map editor.  |
| 7  | Click <b>Save</b> .  |
| 8  | The map drawing is now imported and you can now configure victor objects on it.  |
| 9  | From the map editor, select icon  . |
| 10 | Icon selector displays.  |

### Note

The Map editor can be accessed by selecting **Maps** from the **Build** tab, then selecting **Show All**. Right click on the map to be edited and select **Edit**.

- 11 Select the icon which matches the object type to be added.
- 12 Click **OK**.
- 13 Drag and drop to the required position on the map. Use resizing/positioning tools as required and then right-click the icon.
- 14 Click **Drop on map**. The Icon editor displays.
- 15 Click **Select Object**. The object selector displays.
- 16 Select the victor object to be linked to the icon and click **OK**.
- 17 Use the Icon editor to assign or change other attributes as required.
- 18 Click **OK** and then click **Save**.

#### Note

Refer to the victor configuration manual for a detailed guide on adding and configuring maps.

- End -

## EntraPass Objects

### Procedure 5-10 View EntraPass Gateway

Within the victor environment, **EntraPass Gateway** are view only.

Figure 5-2 EntraPass Gateway editor

| Step | Action |
|------|--------|
|------|--------|

- |   |  |
|---|--|
| 1 | Select <b>EntraPass Gateway</b> from the <b>Show All</b> screen.   |
| 2 | All configured EntraPass Gateway are displayed in an <b>Object List</b> . Use the expanders to view details within each section. |

- End -



Procedure 5-11 View EntraPass Sites

Note

Within the victor environment, **EntraPass Sites** are view only.

Figure 5-3 EntraPass sites editor

General

Name:KT-400 Site

Description:KT-400 Site

☒ Enabled

Communication Protocol

Server Name:test server

Number of Controllers:1

IP Address:10.47.84.211

Connection Type:Secure IP(KT-400)

Port Number:18810

Baud Rate:19200

Serial Port Number:255

Protocol:TCP

Status

Communication Status:Online

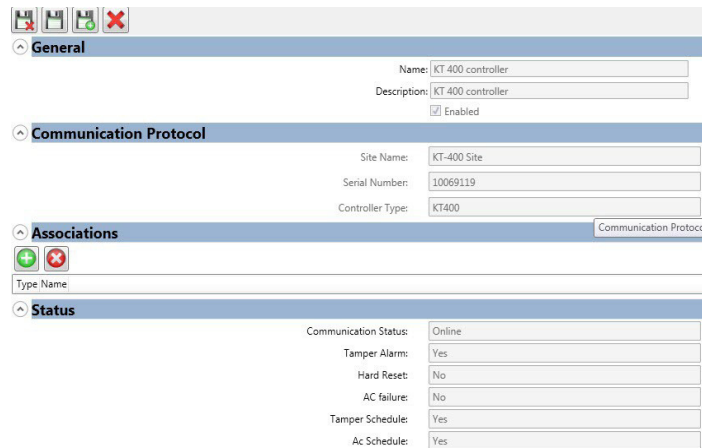
| Step    | Action   |
|---------|--|
| 1       | Select <b>EntraPass Site</b> from <b>Show All</b> screen.  |
| 2       | All configured EntraPass sites are displayed in an <b>Object List</b> . Use the expanders to view details within each section. |
| - End - |  |

Procedure 5-12 View EntraPass Controllers

Note

Within the victor environment, **EntraPass Controllers** are view only.

Figure 5-4 EntraPass controller editor



**General**

Name:

Description:

☒ Enabled

**Communication Protocol**

Site Name:

Serial Number:

Controller Type:

**Associations**

| Type Name            | Communication Protocol |
|----------------------|------------------------|
| <input type="text"/> | <input type="text"/>   |

**Status**

Communication Status:

Tamper Alarm:

Hard Reset:

AC failure:

Tamper Schedule:

AC Scheduler:

| Step | Action |
|------|--------|
|------|--------|

- |   |  |
|---|--|
| 1 | Select <b>EntraPass Controller</b> from <b>Show All</b> screen.  |
| 2 | All configured EntraPass controllers are displayed in an Object List. Use the expanders to view details within each section. |

Table 2: Controller Status

| Property            | Value   |
|---------------------|---------|
| CommunicationStatus | Online  |
|                     | Offline |
| HardReset           | Yes     |
|                     | No      |
| TemperAlarm         | Yes     |
|                     | No      |
| AC Failure          | Yes     |
|                     | No      |
| Tamper Schedule     | Yes     |
|                     | No      |
| AC Schedule         | Yes     |
|                     | No      |

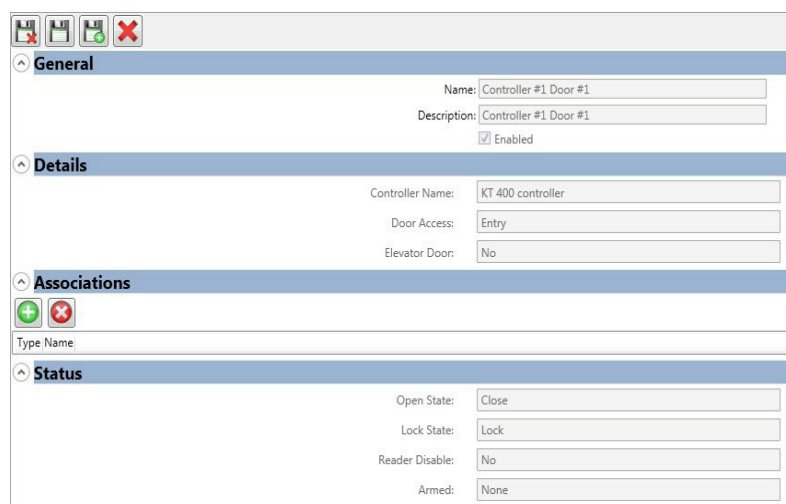
- End -

### Procedure 5-13 View EntraPass Doors

#### Note

Within the victor environment, **EntraPass Doors** are view only.

Figure 5-5 EntraPass door editor



**General**

Name: Controller #1 Door #1

Description: Controller #1 Door #1

☒ Enabled

**Details**

Controller Name: KT 400 controller

Door Access: Entry

Elevator Door: No

**Associations**

Type Name:

**Status**

Open State: Close

Lock State: Lock

Reader Disable: No

Armed: None

| Step | Action  |
|------|---|
| 1    | Select <b>EntraPass Door</b> from <b>Show All</b> screen.   |
| 2    | All configured <b>EntraPass Doors</b> are displayed in an <b>Object List</b> . Use the expanders to view details within each section. |



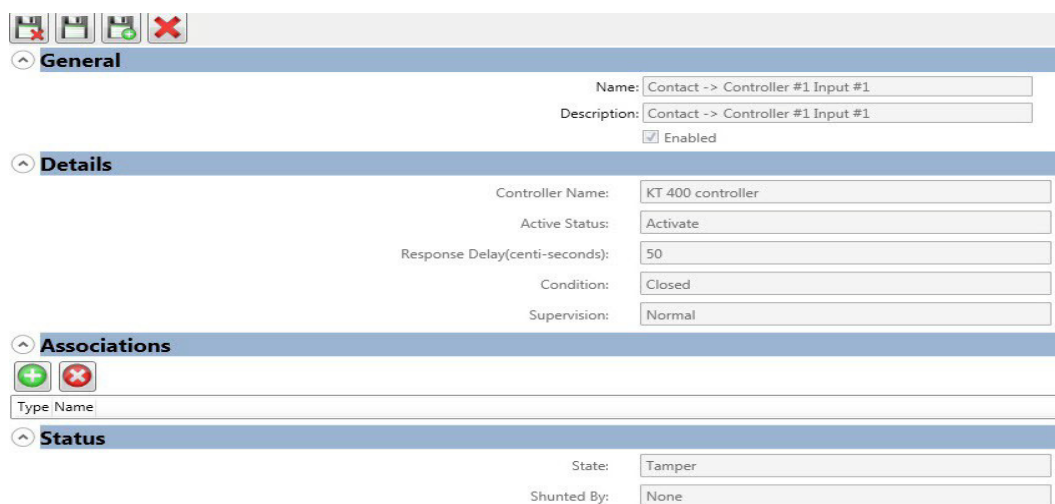
- End -

## Procedure 5-14 View EntraPass Inputs

### Note

Within the victor environment, **EntraPass Inputs** are view only.

Figure 5-6 EntraPass Input Editor



**General**

Name: Contact -> Controller #1 Input #1

Description: Contact -> Controller #1 Input #1

☒ Enabled

**Details**

Controller Name: KT 400 controller

Active Status: Activate

Response Delay(centi-seconds): 50

Condition: Closed

Supervision: Normal

**Associations**

Type Name:

**Status**

State: Tamper

Shunted By: None

| Step    | Action  |
|---------|---|
| 1       | Select <b>EntraPass Input</b> from <b>Show All</b> screen.  |
| 2       | All configured EntraPass Inputs are displayed in an Object List. Use the expanders to view details within each section. |
| - End - |   |

#### Note

The following **Shunted by** statuses requires the KT-400 controller to be connected with the supported intrusion panels:

- Door Disarmed
- Shunted on Exit
- Shunted on Entry

### Procedure 5-15 View EntraPass Relays

#### Note

Within the victor environment, **EntraPass Relays** are view only.

**Figure 5-7 EntraPass Relay Editor**

The screenshot shows the 'EntraPass Relay Editor' window. It has a sidebar with icons for General, Details, Associations, and Status. The main area is divided into four sections:

- General:** Contains fields for 'Name' (Controller #1 Relay #1) and 'Description' (Controller #1 Relay #1). There is a checkbox for 'Enabled' which is checked.
- Details:** Contains fields for 'Controller Name' (KT 400 controller), 'Operation Mode' (Normal), and 'Activation Period' (5).
- Associations:** Contains a 'Type Name' field and a list of associations with '+' and '-' icons.
- Status:** Contains a 'Status' dropdown menu (set to 'ActivateOperator') and a 'Deactivate Temp' checkbox (set to 'No').

| Step    | Action  |
|---------|---|
| 1       | Select <b>EntraPass Relay</b> from <b>Show All</b> screen.  |
| 2       | All configured EntraPass relays are displayed in an Object List. Use the expanders to view details within each section. |
| - End - |   |

## Procedure 5-16 View Personnel

### Note

Within the victor environment, Synchronized Personnel are displayed in the **Personnel** Tab.

| Step    | Action   |
|---------|--|
| 1       | Select <b>Personnel</b> from <b>Show All</b> screen. |
| 2       | All Synchronized Personnel are displayed.            |
| - End - |  |

## Swipe and Show

When a user swipes the card on the reader, the corresponding swipes are displayed in the **Swipe and Show** tab.

### Note

For the **Swipe and Show** to function, ensure the following:

- 1 **Personnel** and personnel images are synchronized.
- 2 **Swipe and Show** tab is open.

## Procedure 5-17 Viewing Swipe and Show

| Step    | Action   |
|---------|--|
| 1       | Select <b>Swipe and Show</b> from <b>New</b> tab screen.   |
| 2       | Choose one of the following options: <ul style="list-style-type: none"> <li>•Monitor all Doors for Admits</li> <li>•<b>Monitor all Doors for Rejects</b></li> <li>•<b>Monitor all Doors for Admits/Rejects.</b></li> </ul> |
| 3       | The details of the Personnel with the image is displayed in the <b>Swipe and Show</b> tab.   |
| - End - |  |

## General Operation

After integration the following functions are available in victor Client:

## Manual Actions

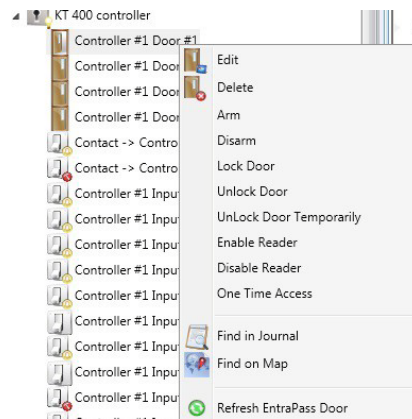
### Doors

You can **Lock, Unlock, Temporarily Unlock Doors, Arm, Disarm, Enable Readers, One Time Access** and **Disable Readers** from the **Device List, Maps, dynamic views** and **activity viewer**.

#### Note

To perform **Arm** or **Disarm** actions, **Doors** need to be associated with an external intrusion panel connected with a KT-400 controller.

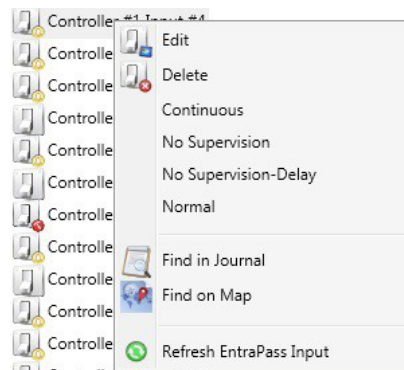
**Figure 5-8 Manual actions: Doors**



### Inputs

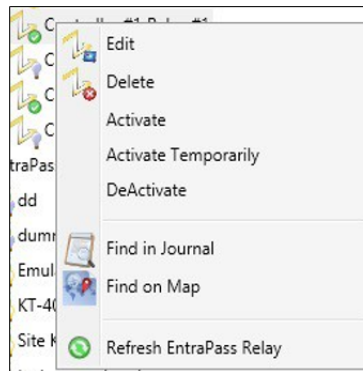
You can perform the following manual actions on an Input from **Device List, Maps, dynamic views** and **activity viewer**.

**Figure 5-9 Figure 4-8 Manual actions: Inputs**



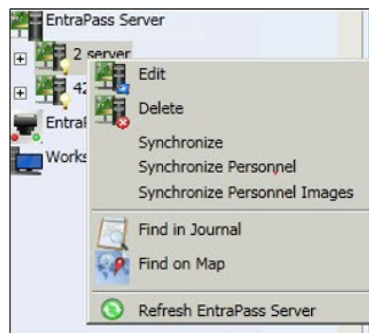
### Relays

You can **Activate, Deactivate** and **Temporarily Activate Relays** from the **Device List, Maps, Dynamic Views** and **Activity Viewer**.

**Figure 5-10 Figure 4-8 Manual actions: Relays**

## Servers

You can manually synchronize Server objects, Personnel, and Personnel Images from the Device List, Maps, Dynamic Views and Activity viewer.

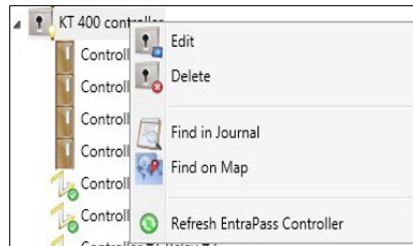
**Figure 5-11 Manual Actions: Servers**

## Context (Right Click) Menu options

This section details context menu options available on EntraPass objects from the Device List, Maps, Dynamic Views and Activity Viewer.

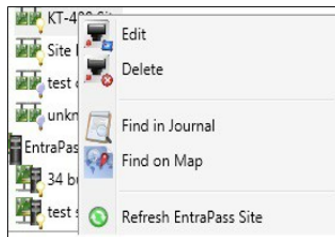
## Controllers

Right-clicking Controllers offers the following options:

**Figure 5-12 Context Menu: Controllers**

## Sites

Right-clicking Sites offers the following options:

**Figure 5-13 Context Menu: Sites**



# Troubleshooting

## Troubleshooting:

This section provides troubleshooting information for issues that may occur in the EntraPass Integration.

### Problem:

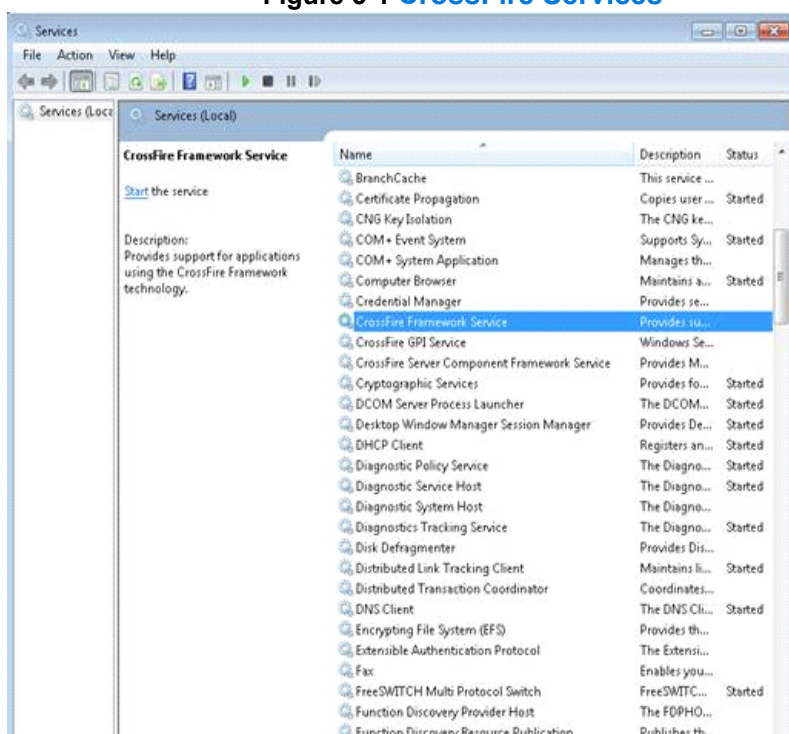
Sometimes the installation may fail if the CrossFire service does not stop on time and throws a time out error.

### Solution:

Ensure that you have completed the following steps:

- Check if the CrossFire service is stopped from services panel in case of installation failure. Refer to Figure 5-1 CrossFire Services on page 21.
- Wait till the CrossFire service is stopped and then trigger the installation again. This will work fine as the service is stopped already.

**Figure 5-1 CrossFire Services**



### Problem:

EntraPass Server is not communicating with victor.

### Solution:

Ensure that you have completed the following steps:

- 1 Validate firewall settings. Add required ports in Inbound and Outbound port list of firewall.
- 2 Ensure IP Address or System Name are correct.
- 3 Ensure that the current network configurations are able to validate the Machine Name provided in **Machine Name** or **IP Address** field of the EntraPass Server editor.
- 4 Ensure that the required services are running on EntraPass server.

## Appendix A

### KT 400 Controller configuration with DSC PowerSeries

#### Requirements

- EntraPass Server is installed.
- A DSC PowerSeries alarm panel and an IT-100 module.
- Door contact is connected on KT-400.
- RS-232 cable and 740-1047 adapter (p/n CBLK-IT100).
- Up-to-date KT-400 firmware.

#### Hardware Setup

To connect the IT-100 to the KT-400 and the DSC PowerSeries Intrusion panel, follow the steps below:

| Step   | Action   |
|--|--|
| 1  | <p>Connect the IT-100 to the alarm panel:</p> <ol style="list-style-type: none"> <li>Power down the alarm panel.</li> <li>Connect the IT-100 module to the DSC PowerSeries Intrusion panel using a 4-wire KEYBUS connection. Connect the RED, BLK, YEL and GRN terminals to the KEYBUS terminals of the DSC PowerSeries Intrusion panel.</li> <li>Power up the alarm panel.</li> </ol> |
| 2  | To connect the IT-100 to the KT-400, refer to last page of the DSC IT-100 manual.  |
| <p><b>Note</b></p> <p>The IT-100 can be connected at a maximum distance of 98.4ft (30m) at 9600 rate from the KT-400. Refer to the DSC IT-100 manual for more information.</p> |  |
| - End -  |  |

#### EntraPass Setup

For the EntraPass setup see **Setting up DSC Integration through a KT-400 Controller** manual or contact the Kantech support team.

## KT-NCC Controller Configuration

The current EntraPass Integration supports the following use cases:

- Import of Sites, Controllers, Doors, Inputs and Output configuration.
- Control commands to doors and outputs.
- Status and event notifications from EntraPass.
- KT-NCC network communications controller.

## What is the KT NCC?

Kantech KT-NCC is a powerful way to expand an EntraPass Global edition system. Instead of relying on a PC for communication between the controllers and server, KT-NCC network communicator module is in control.

KT-NCC manages communication between the EntraPass software and the door controllers.

All the events from the controllers are stored in the KT-NCC for additional security in the event of communication failure between the controllers and the server. KT-NCC supports any combination of up to 128 controllers.

For more information about the KT NCC, go to <http://www.kantech.com/>.

## Appendix B

### Configuring EntraPass for remote victor Client operation

This section describes the steps required to configure EntraPass Server for use with victor unified Client over a secure (https) connection.

#### Prerequisites

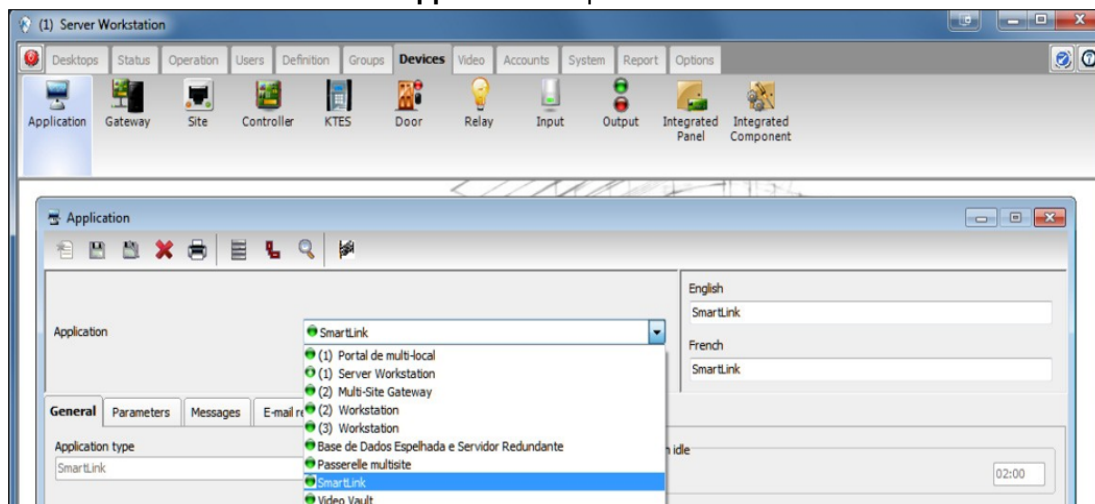
- EntraPass Server
- victor Unified Client
- Kantech SmartService and SmartLink Running

#### Note

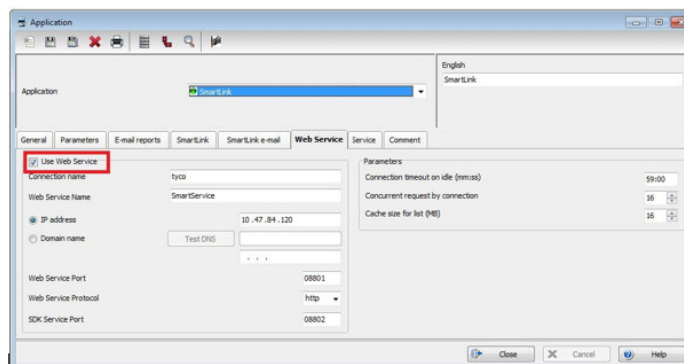
SmartLink and WebStation must have been previously registered in EntraPass for the SmartLink Webstation tab to be available. Refer to the EntraPass Reference manual for more information.

#### Procedure 7-1 Configuring EntraPass for remote victor Client operation

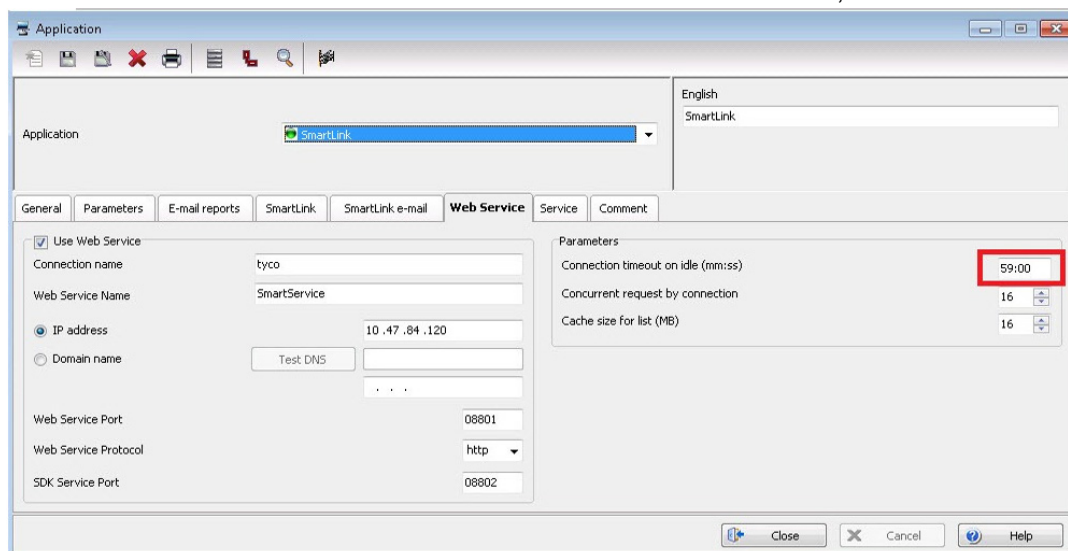
| Step | Action  |
|------|---|
| 1    | Login to the EntraPass Server Workstation.                          |
| 2    | Select <b>Devices/Application</b> .                                 |
| 3    | Select <b>SmartLink</b> from the <b>Application</b> drop down list. |



- 4 Click the **Web Service** tab.



- 5 Ensure that the **Use Web Service** field is checked.
- 6 Ensure that the Connection Time Out on Idle is set to the maximum, which is 59 minutes.



- End -

## Configuring Ports with an SSL Certificate

To configure a port, the tool you use depends on the operating system that is running on your machine.

Depending on the Operating system of your machine, different tools can be used. For Windows Server 2003 or Windows XP - use the HttpCfg.exe tool that is installed with Windows Server 2003.

For more information refer to Microsoft Windows Support Tools documentation.

## Prerequisites

- A valid SSL certificate on IIS.
- Port 8801 is open.
- Administrator privileges on the server.

### Note

Modifying certificates stored on the computer requires administrative privileges.

## Procedure 7-2 Getting a Certificate's Thumb-print

| Step | Action   |
|------|--|
| 1    | <p>View certificates in the MMC snap-in:</p> <ol style="list-style-type: none"> <li>Open a Command prompt window</li> <li>Type <b>mmc</b> and press <b>Enter</b>. You must have Administrator privileges to view certificates.</li> <li>On the <b>File</b> menu, click <b>Add/Remove Snap In</b>. Click <b>Add</b>.</li> <li>In the <b>Add Standalone Snap-in</b> dialog box, select <b>Certificates</b>. Click <b>Add</b>.</li> <li>In the Certificates snap-in dialog box, select <b>Computer account</b> and click <b>Next</b>.</li> <li>Optionally, you can select <b>My User account</b> or <b>Service account</b>. If you are not an administrator of the computer, you can manage certificates only for your user account.</li> <li>In the <b>Select Computer</b> dialog box, click <b>Finish</b>.</li> <li>In the <b>Add Standalone Snap-in</b> dialog box, click <b>Close</b>. In the <b>Add/Remove Snap-in</b> dialog box, click <b>OK</b>.</li> <li>In the <b>Console Root</b> window, click <b>Certificates (Local Computer)</b> to view the certificate stores for the computer.</li> <li>(Optional.) To view certificates for your account, repeat steps 3 to 6. In step 7, instead of selecting <b>Computer account</b>, click <b>My User account</b> and repeat steps h to j.</li> <li>(Optional.) On the <b>File</b> menu, click <b>Save</b> or <b>Save As</b>. Save the console file for later reuse.</li> </ol> |
| 2    | <p>Retrieving a certificate's thumb-print</p> <ol style="list-style-type: none"> <li>Open the Microsoft Management Console (MMC) snap-in for certificates.</li> <li>In the <b>Console Root</b> window's left pane, click <b>Certificates (Local Computer)</b>. Click the <b>Personal</b> folder to expand it.</li> <li>Click the <b>Certificates</b> folder to expand it.</li> <li>In the list of certificates, note the <b>Intended Purposes</b> heading. Find a certificate that lists <b>Client Authentication</b> as an intended purpose. Double click the certificate.</li> <li>In the <b>Certificate</b> dialog box, click the <b>Details</b> tab.</li> <li>Scroll through the list of fields and click <b>Thumb-print</b>.</li> <li>Copy the thumbprint of the certificate into a text editor, such as Notepad.</li> <li>Remove all spaces between the hexadecimal characters. (One way to accomplish this is to use the text editor's find-and-replace feature and replace each space with a</li> </ol>  |

null character.) httpcfg set ssl -i 0.0.0.0:8801 -h  
0000000000003ed9cd0c315bbb6dc1c08da5e6

- i In Windows Vista, use the Netsh.exe tool, as shown in the following example: netsh  
http add sslcert ipport=0.0.0.0:8801  
certhash=0000000000003ed9cd0c315bbb6dc1c08da5e6 appid={00112233-4455-6677-  
8899-AABBCCDDEEFF}

---

- End -

---

## Binding an SSL certificate to a port number and support client certificates

- In Windows Server 2003, Server 2008 or Windows XP, to support clients that authenticate with X.509 certificates at the transport layer, follow the preceding procedure but pass an additional command-line parameter to HttpCfg.exe, as shown in the following example: httpcfg set ssl -i 0.0.0.0:8801 -h 0000000000003ed9cd0c315bbb6dc1c08da5e6 -f 2
- In Windows 7, to support clients that authenticate with X.509 certificates at the transport layer, follow the preceding procedure, but with an additional parameter, as shown in the following example: netsh http add sslcert ipport=0.0.0.0:8801 certhash=0000000000003ed9cd0c315bbb6dc1c08da5e6 appid={00112233-4455-6677-8899-AABBCCDDEEFF} clientcertnegotiation=enable